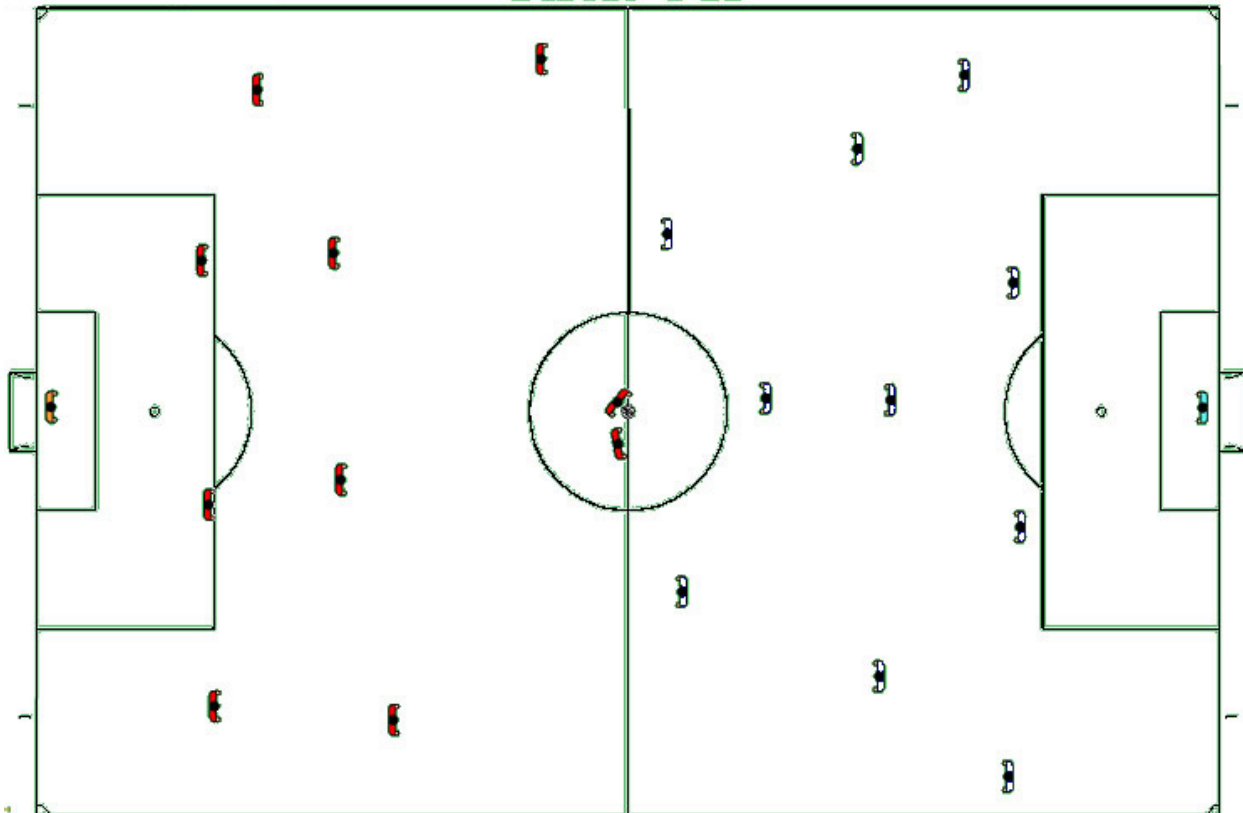


Chose the best location for the referee and the 2 assistant referees in the following scenarios...

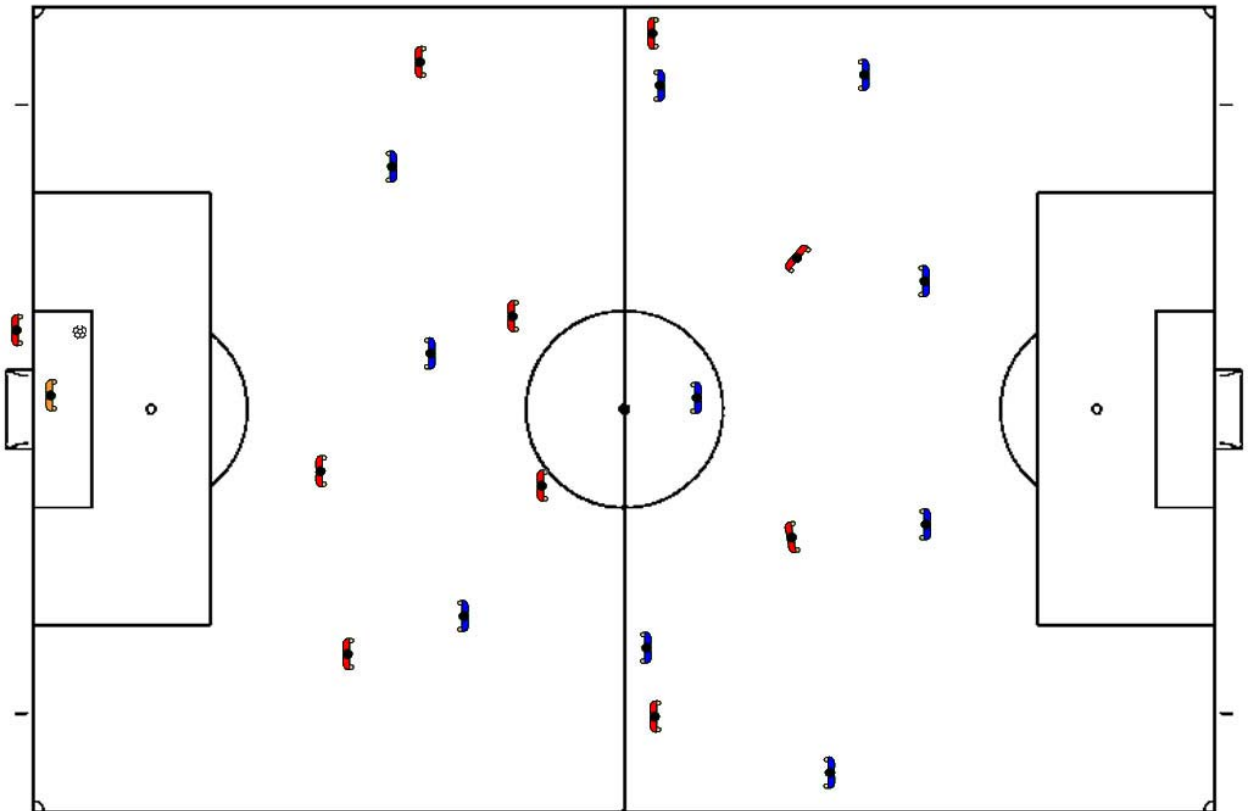
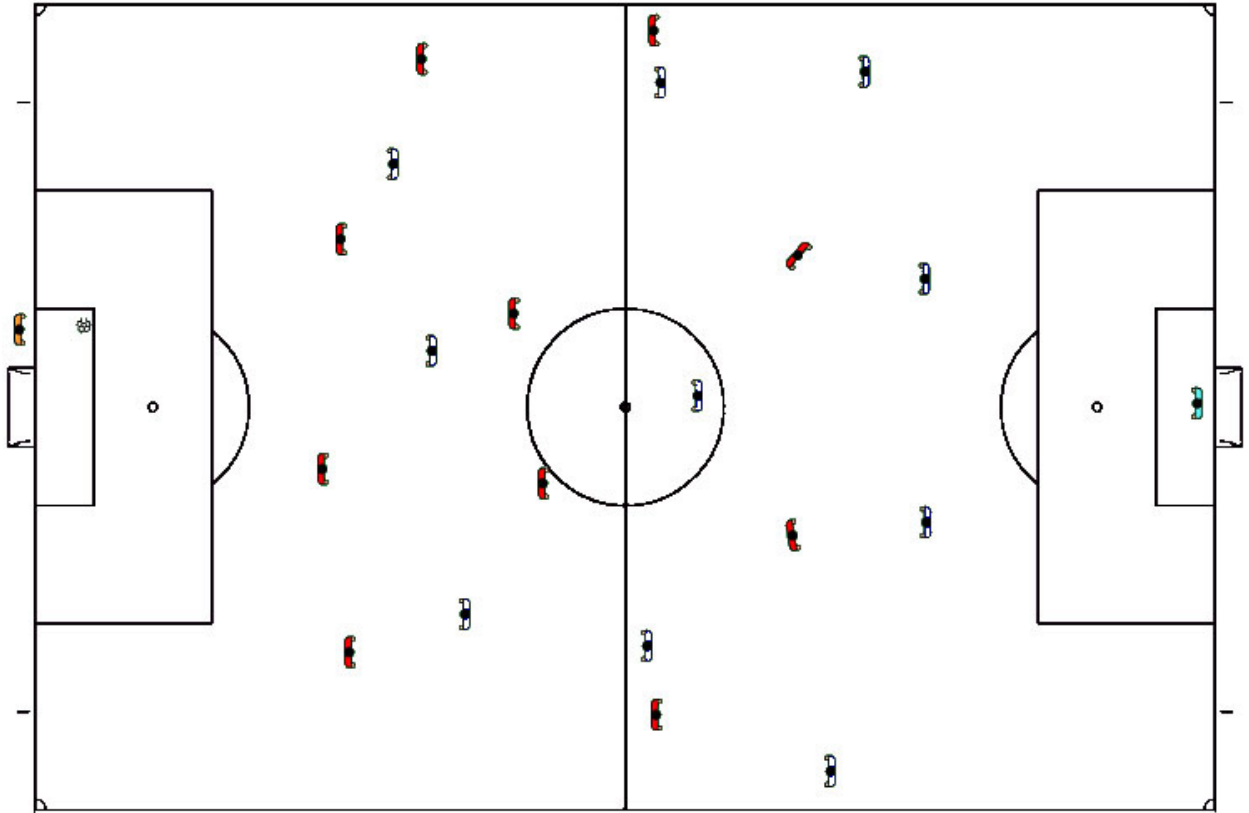
Keep in mind these principles:

1. You want play to be contained between the referee and the leading assistant referee.
2. You don't want the referee interfering with play
3. You want the referee to have a different line of sight from the assistant referee.

1 Kick Off

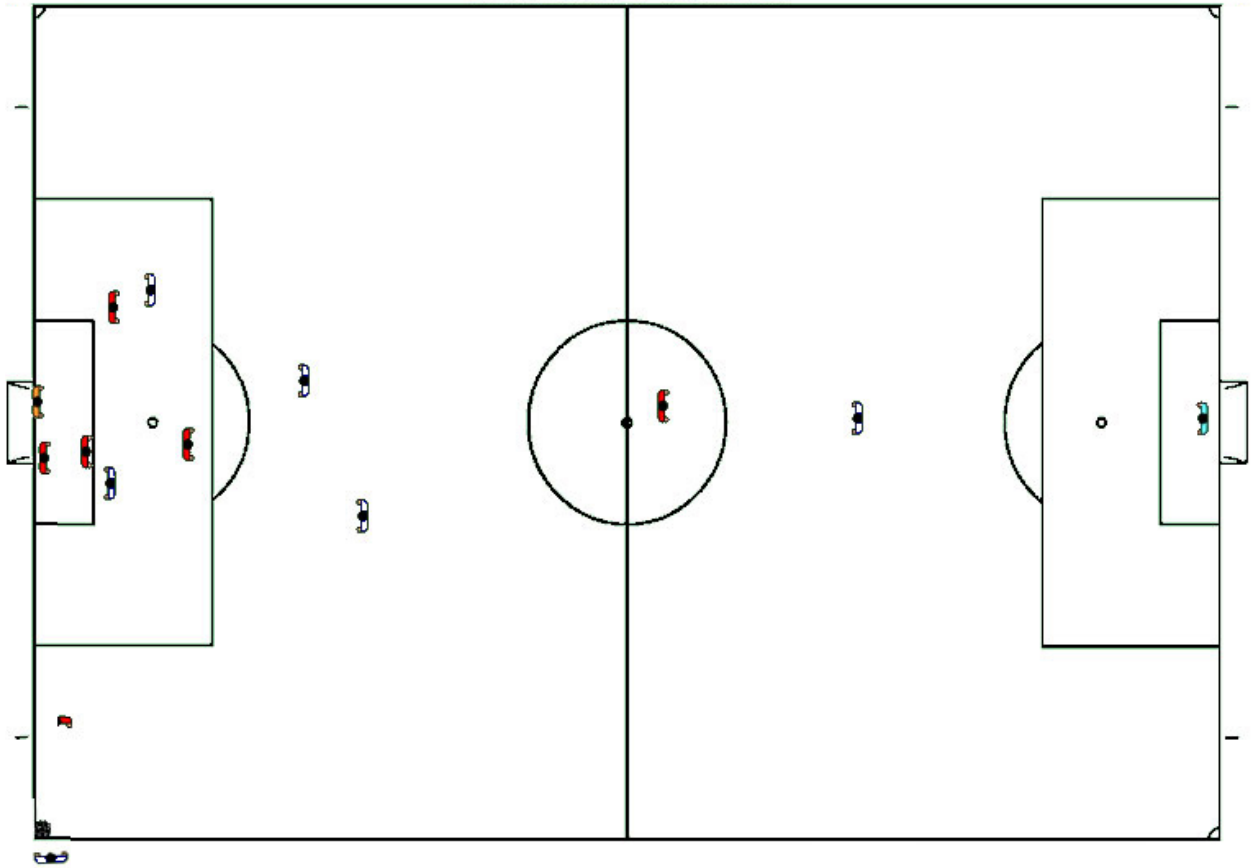


2 Goal Kick

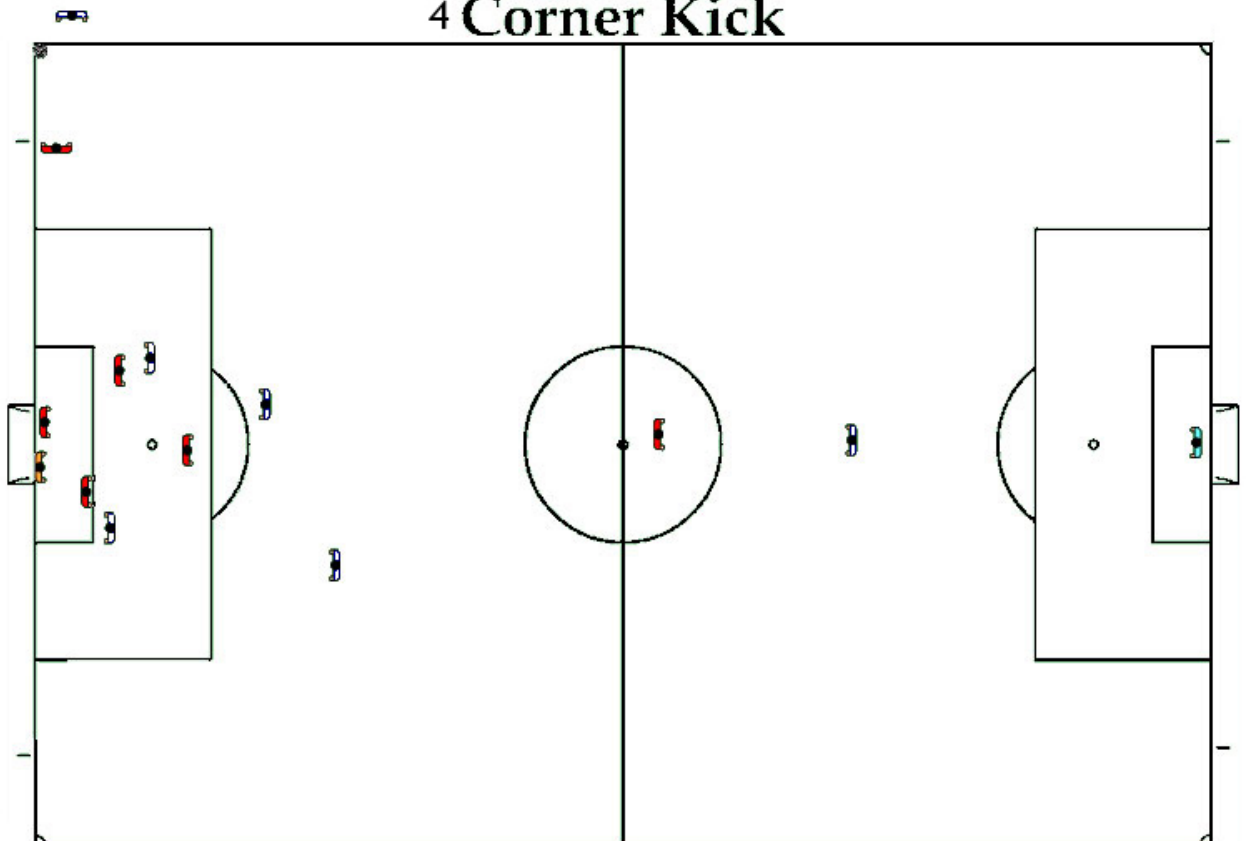


2b Goal kick by defender

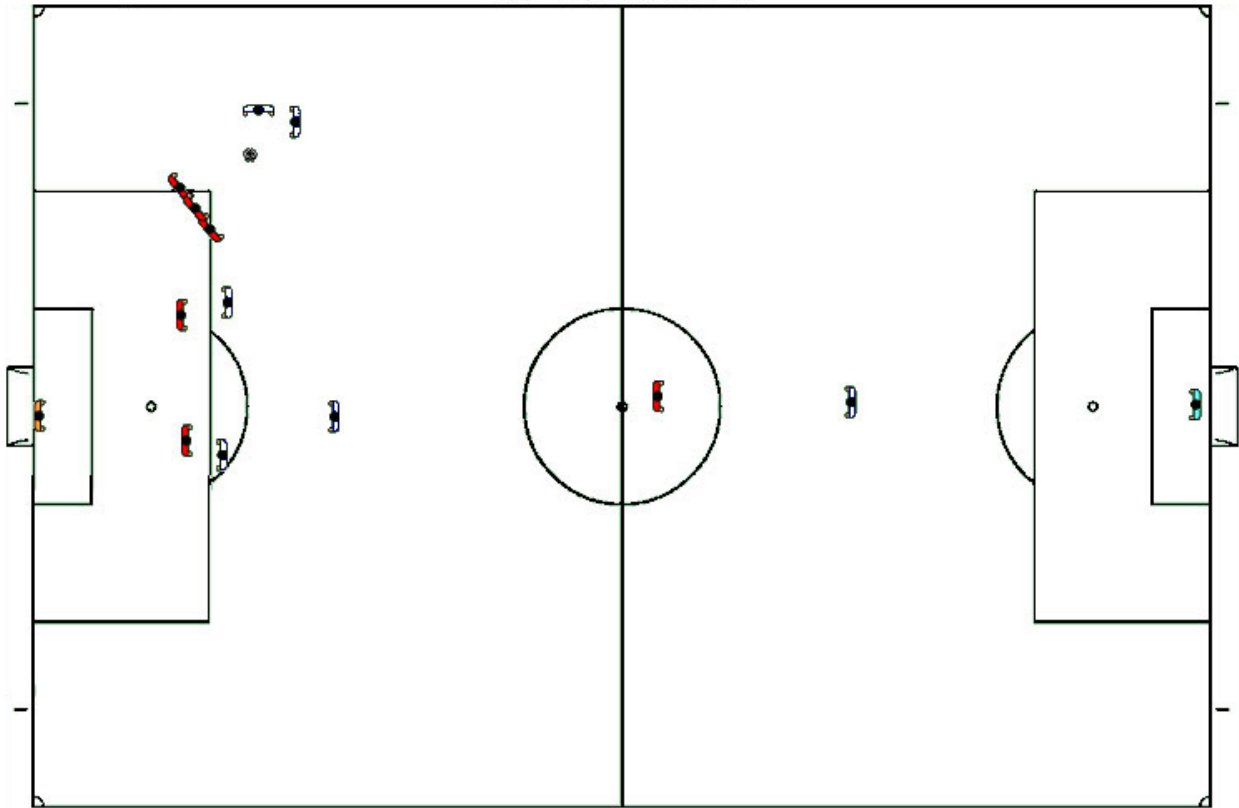
3 Corner Kick



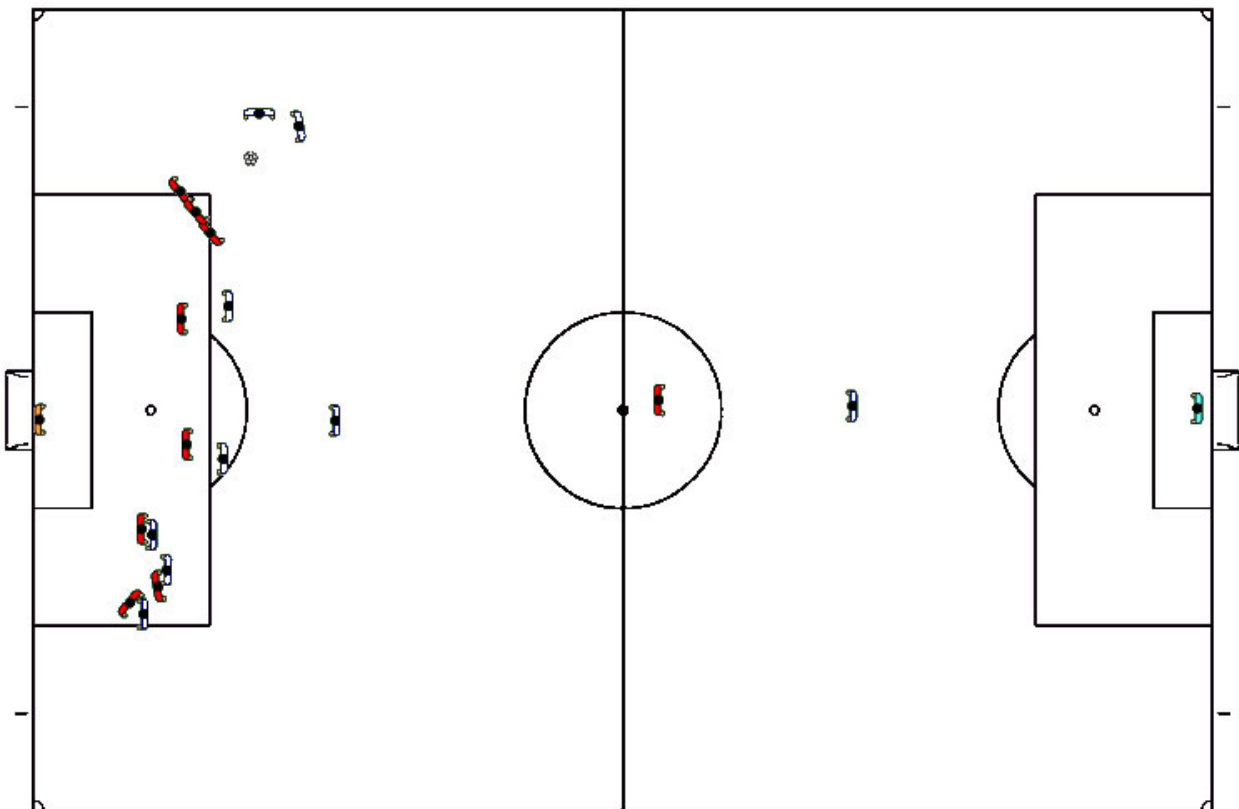
4 Corner Kick



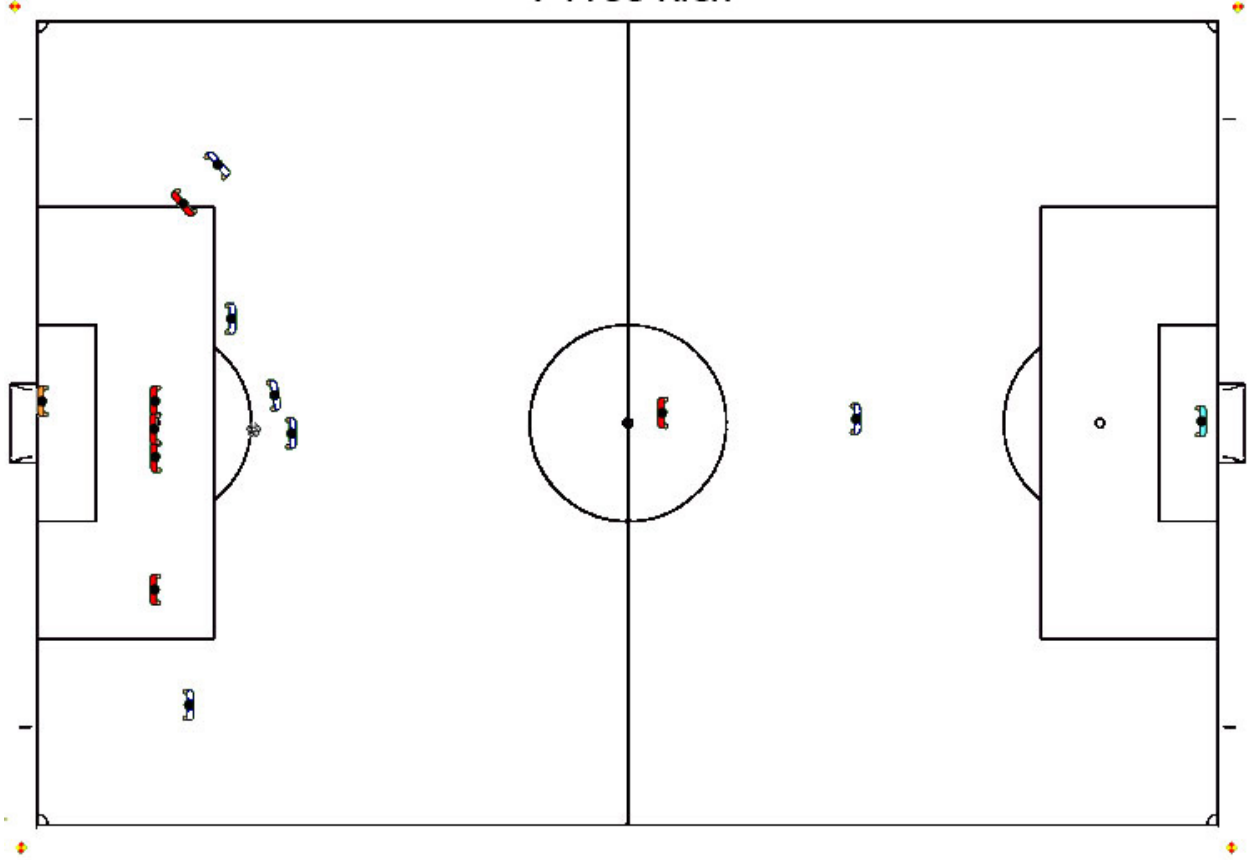
5 Free Kick



6 Free Kick

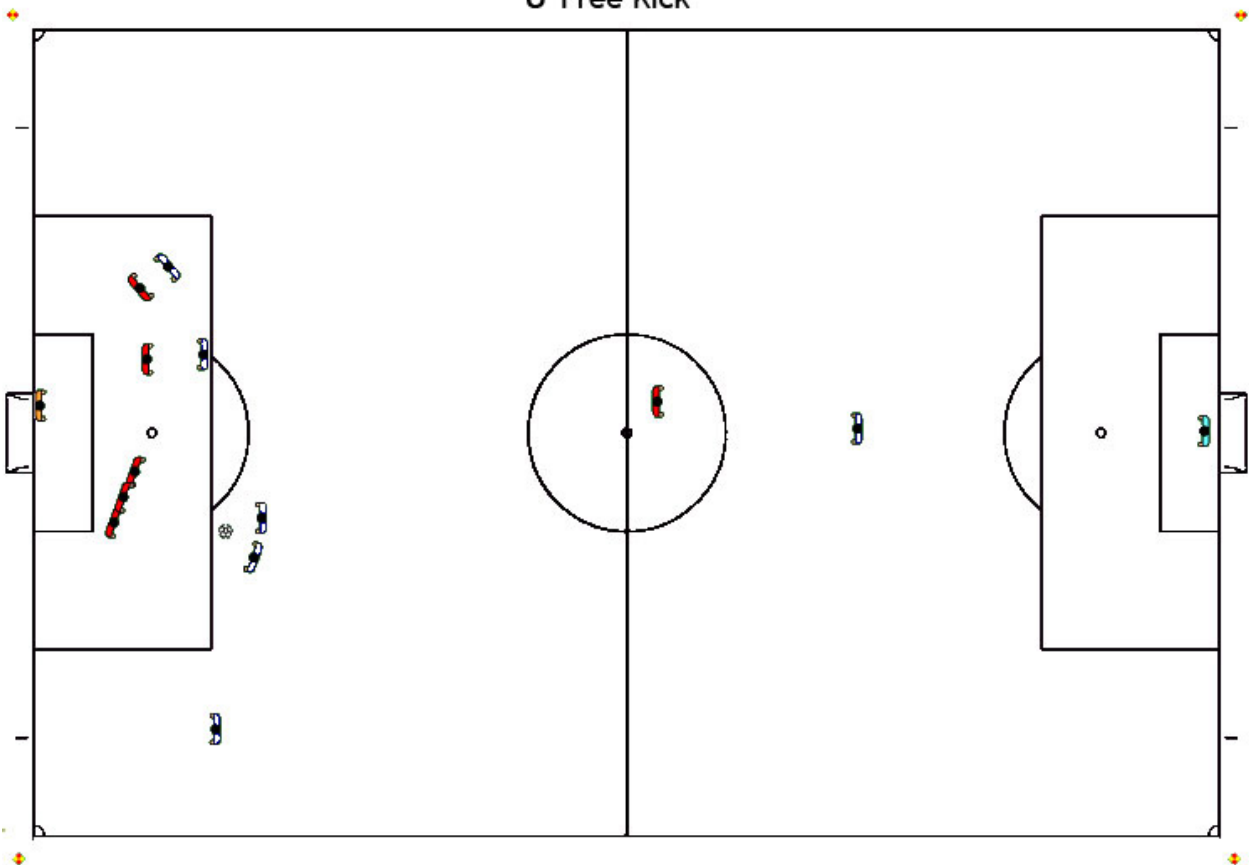


7 Free Kick



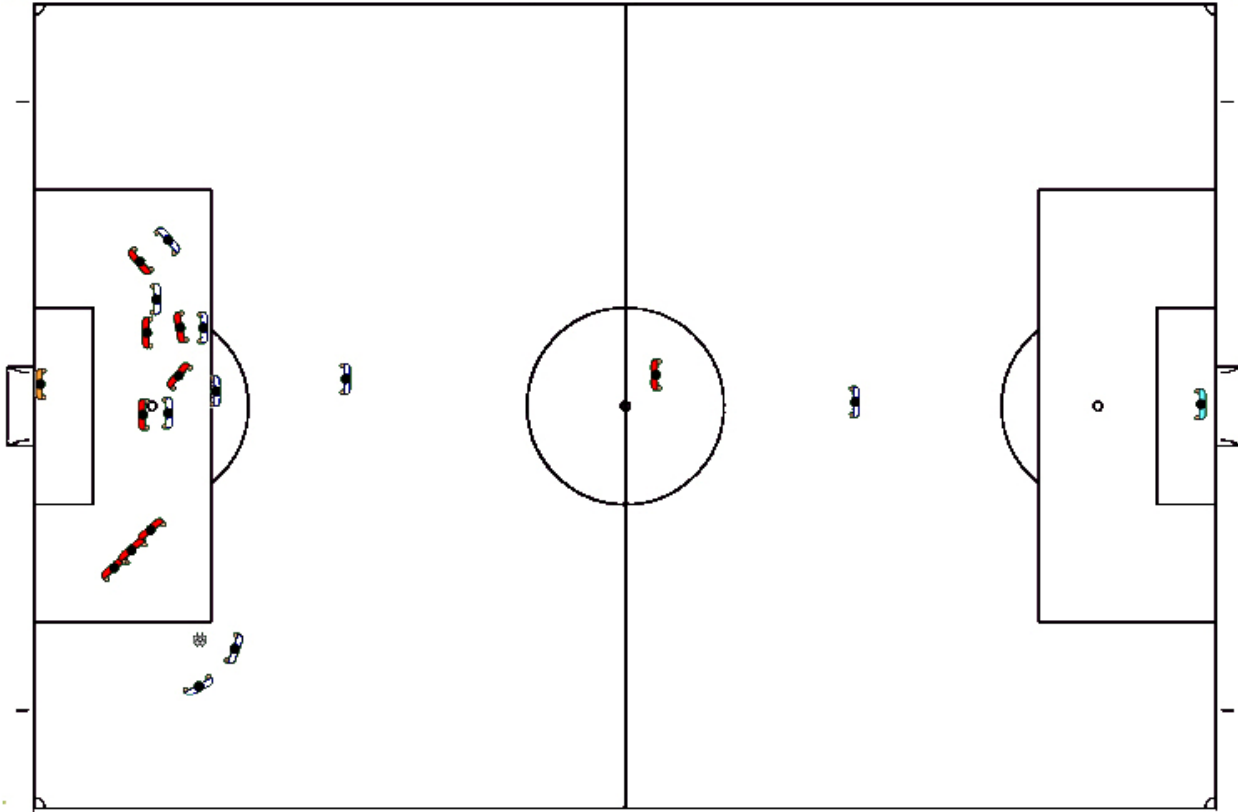
For the Good of the Game

8 Free Kick



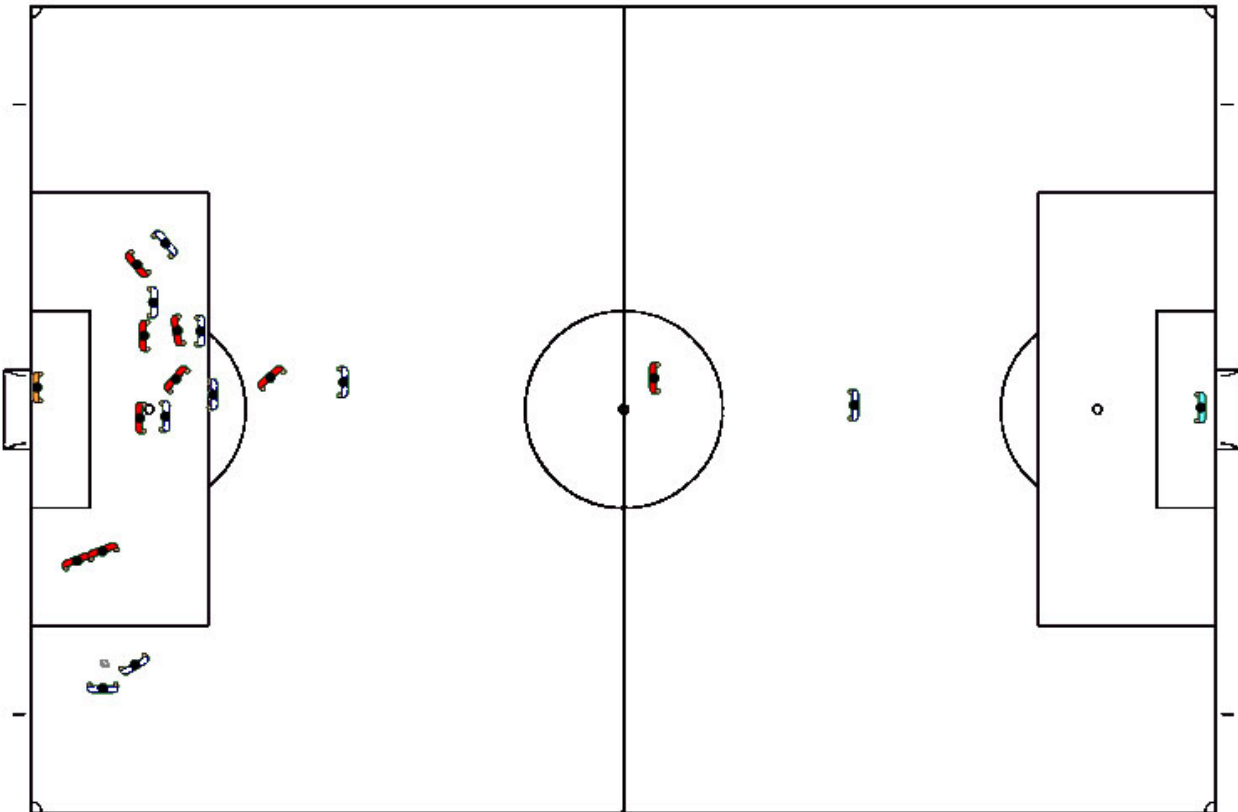
For the Good of the Game

9 Free Kick

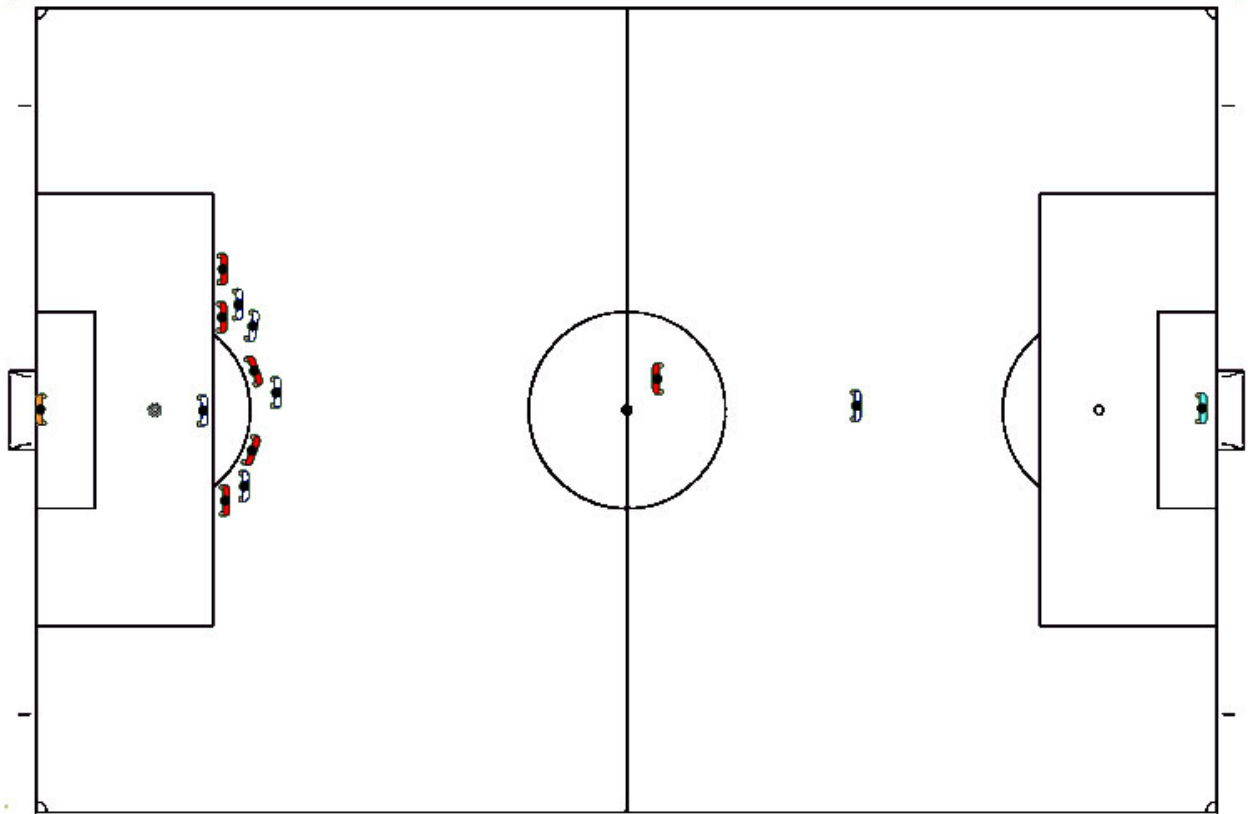


For the Good of the Game

10 Free Kick

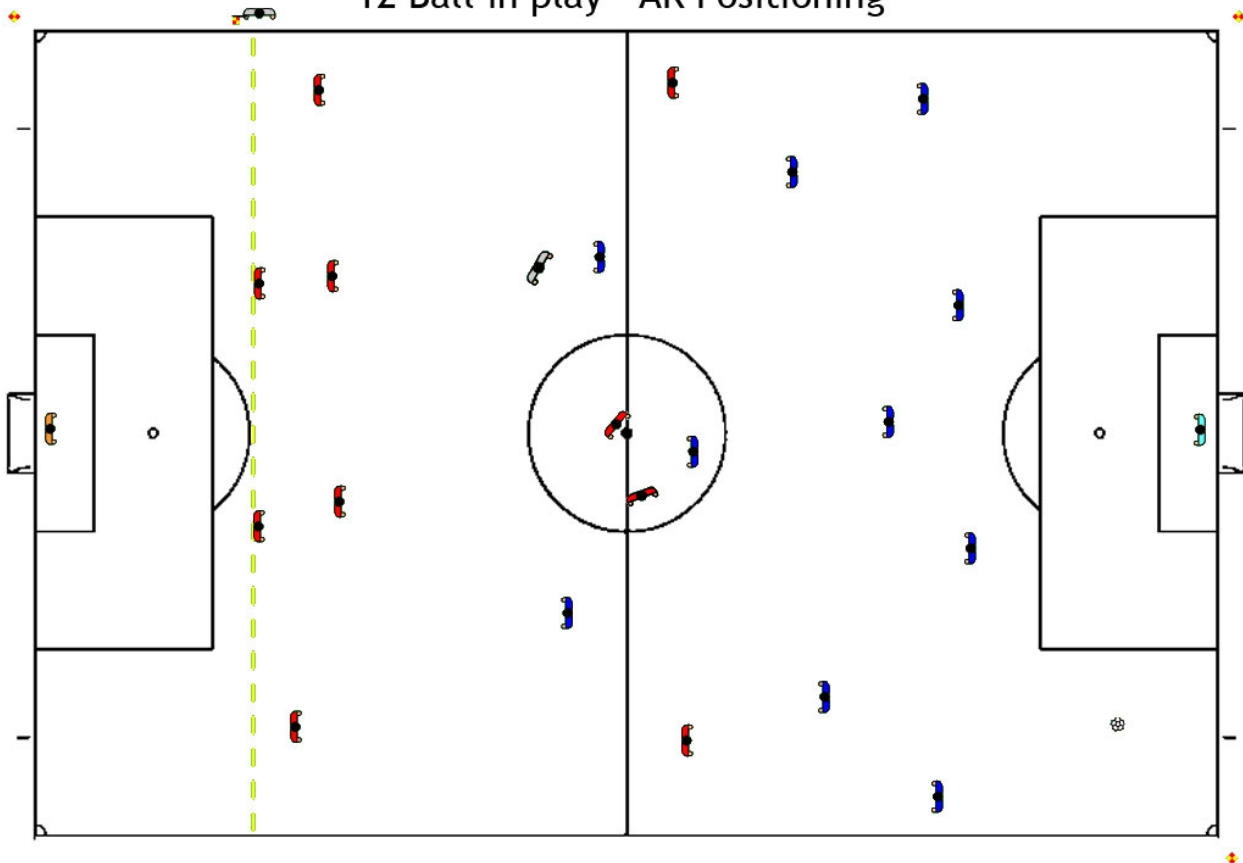


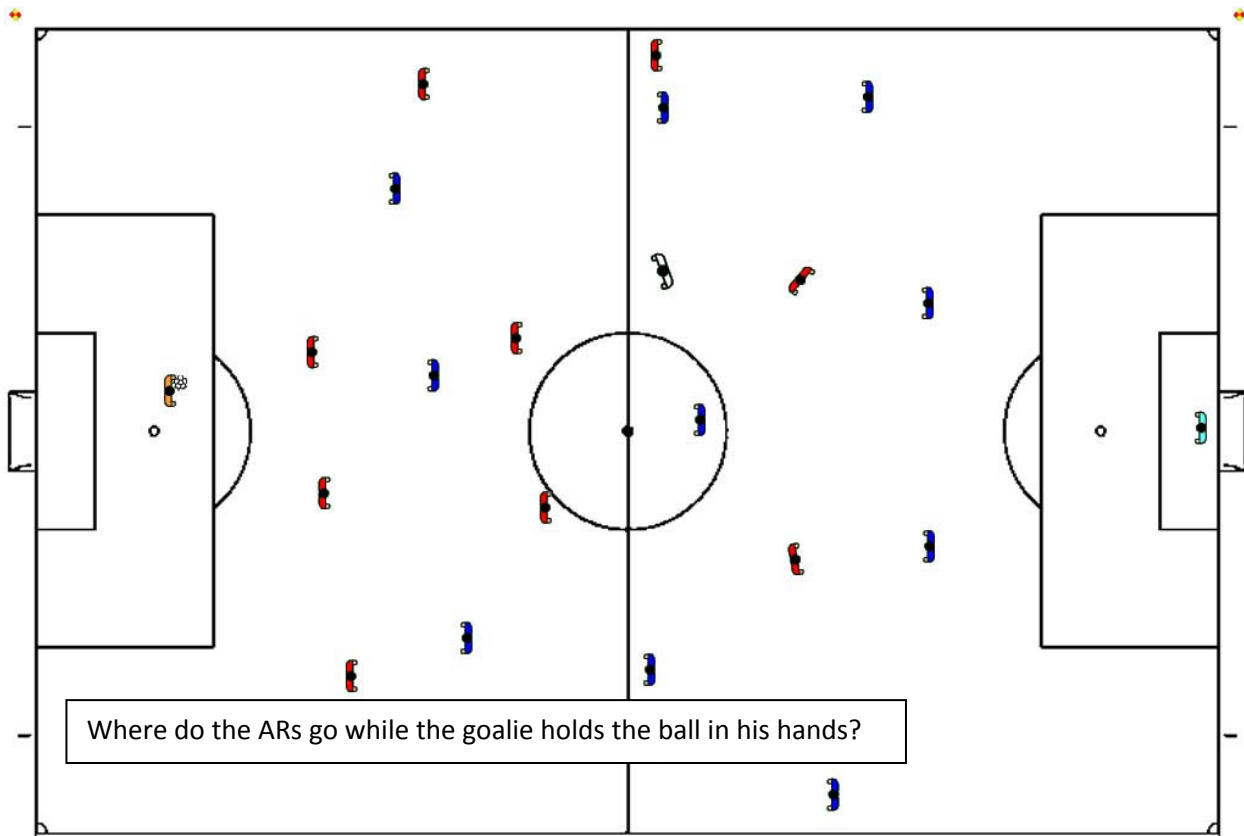
11 Penalty Kick



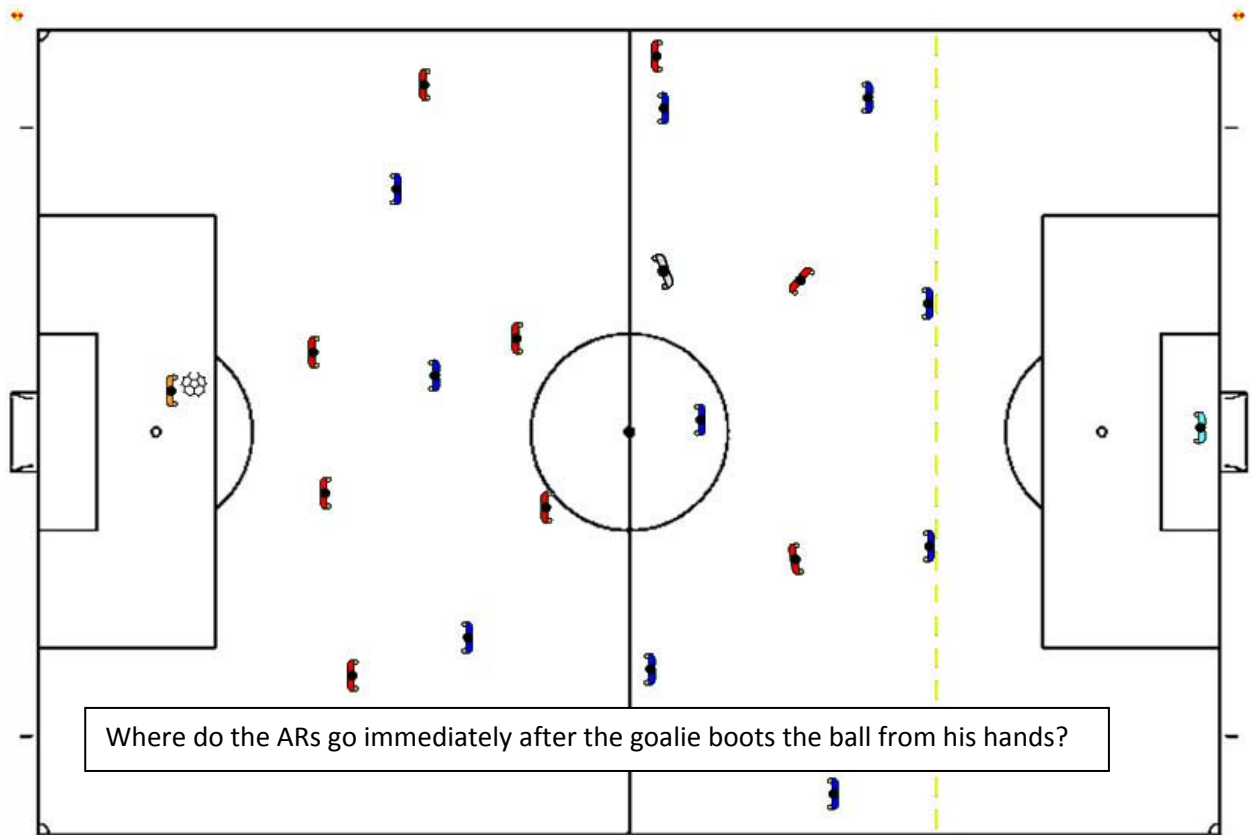
For the Good of the Game

12 Ball in play - AR Positioning



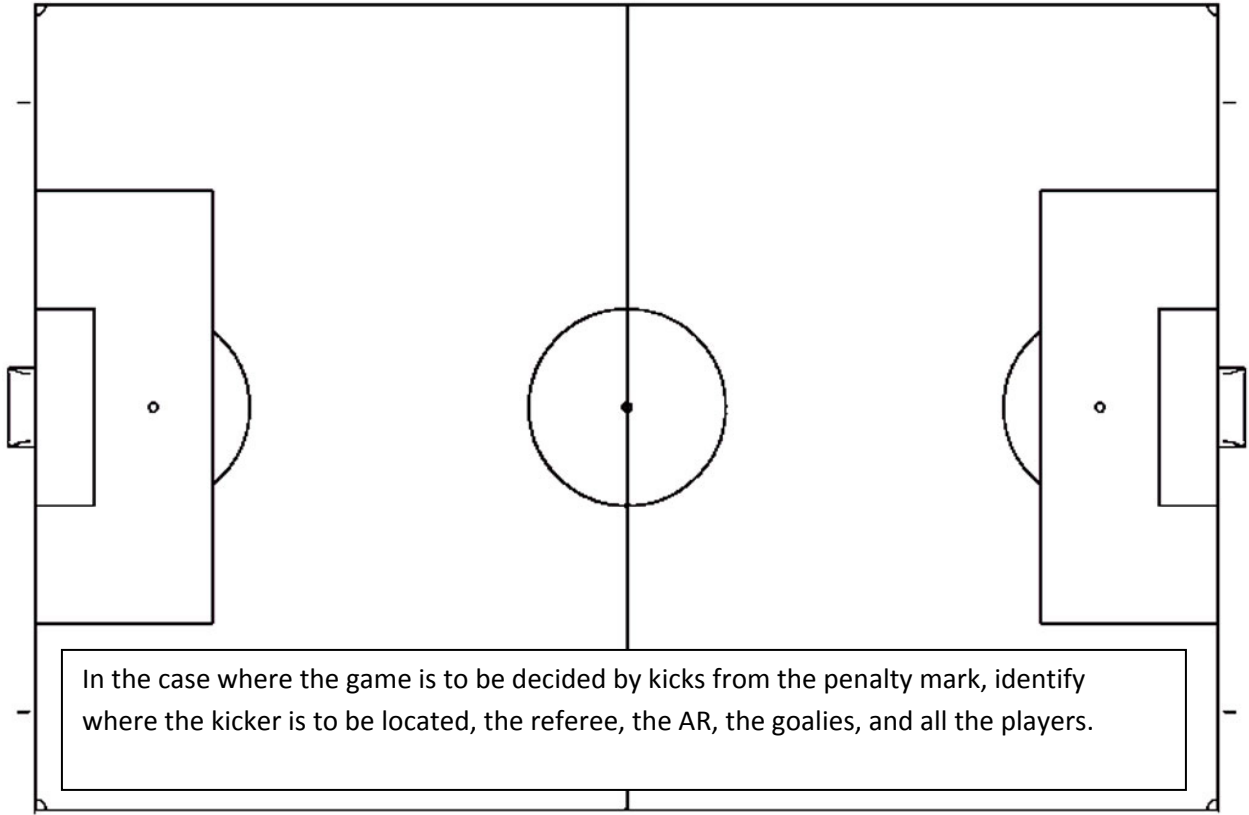


13 Goalkeeper handles ball

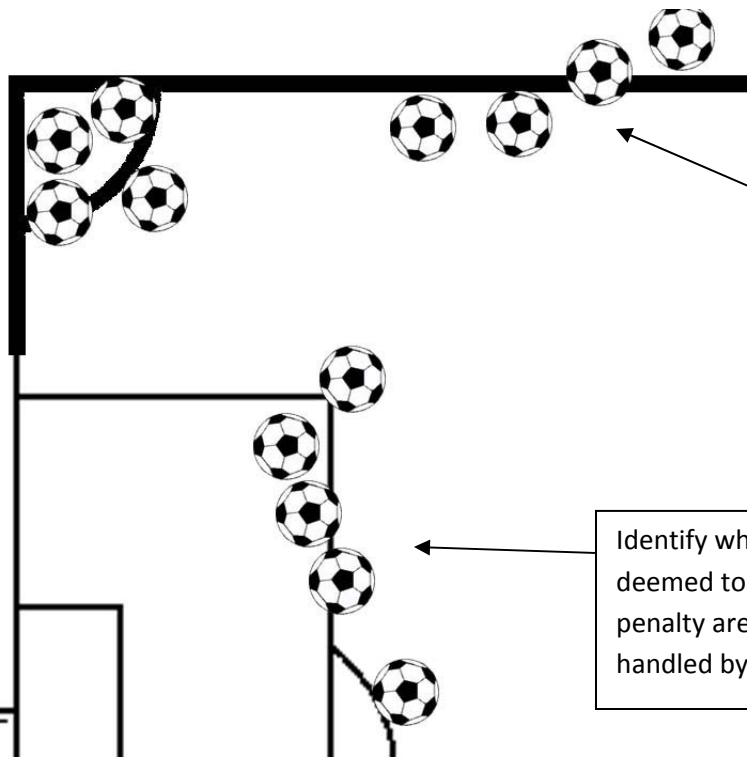


14 Goalkeeper releases ball

15 Kicks from the Penalty Mark



Identify which of these 4 are properly placed for a corner kick



Identify which of these 4 are in bounds and out of bounds

Identify which of these 5 are deemed to be inside the penalty area & thus can be handled by the goalie.